

Assembly Instructions

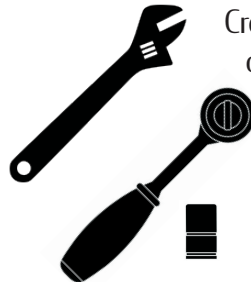
Stamped Steel Cross Table Bases



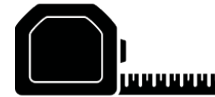
What you will need for assembly:



Drill driver or
screwdriver



Crescent wrench
or socket set



Tape measure

What's in the box:

(8) 3/4" #10 screws



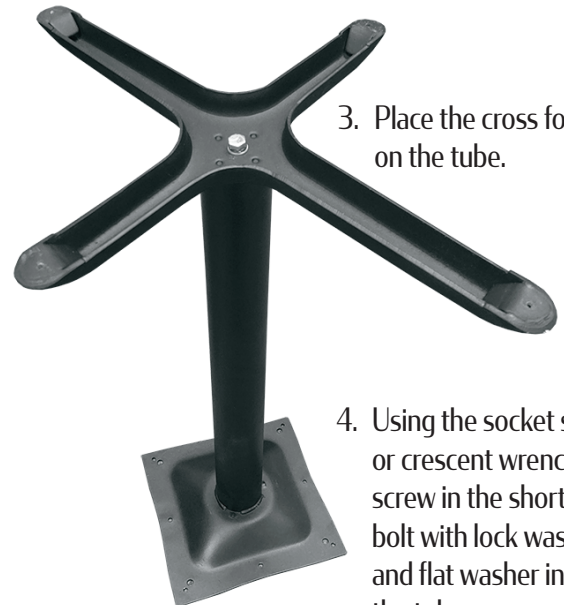
1. Flip your tube/spider so the spider is on the ground and the bottom of the tube is facing up.



2. Screw out the short bolt in the bottom of the tube/spider.



3. Place the cross foot on the tube.



4. Using the socket set or crescent wrench, screw in the short bolt with lock washer and flat washer into the tube

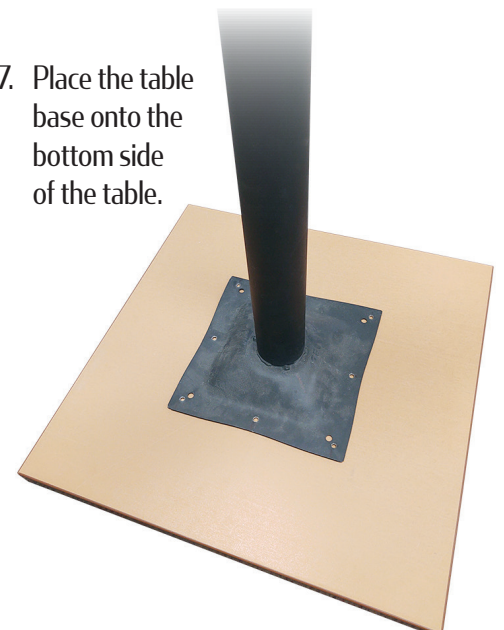


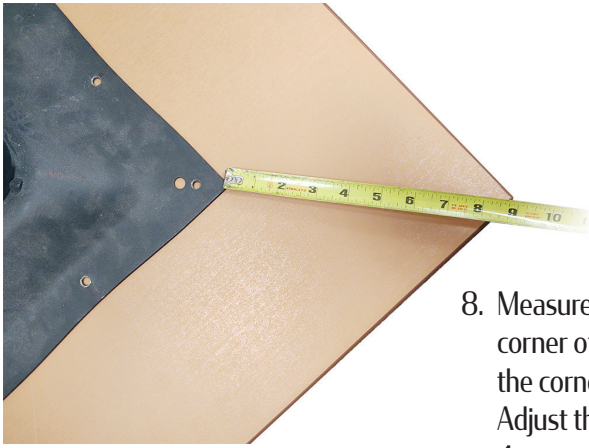
5. Locate the leveling glides and screw into the welded end tabs of the cross foot.



6. Your table base is now ready to be mounted to the table.

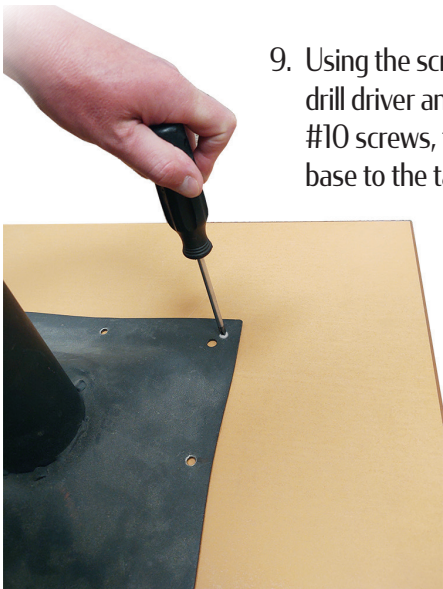
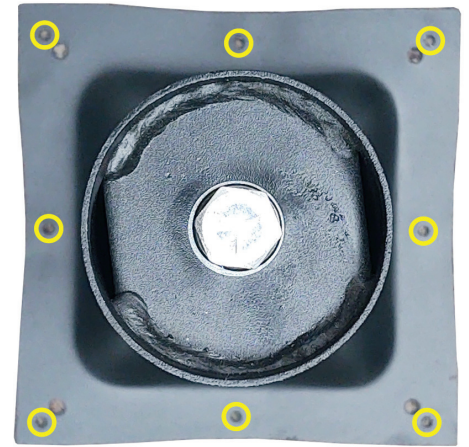
7. Place the table base onto the bottom side of the table.





8. Measure from each corner of the spider to the corner of the table. Adjust the base until all 4 corners are equal.

9. Use the 8 perimeter holes on the spider (circled in yellow) to fasten the base to the table top.



9. Using the screwdriver or drill driver and (8) 3/4" #10 screws, fasten the base to the table top.

10. Assembly is complete. Enjoy your Oak Street Manufacturing black stamped steel table base!



Thank you for your business!



255 Welter Drive
Monticello, IA 52310

OAK STREET
MANUFACTURING
SUPERIOR RESTAURANT FURNISHINGS

P: 877.465.4344
F: 877.465.4042
www.oakstreetmfg.com