

Assembly Instructions

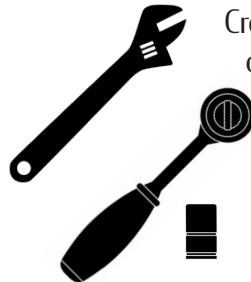
Chrome Plated Stamped Steel Cross Table Bases



What you will need for assembly:



Drill driver or
screwdriver



Crescent wrench
or socket set



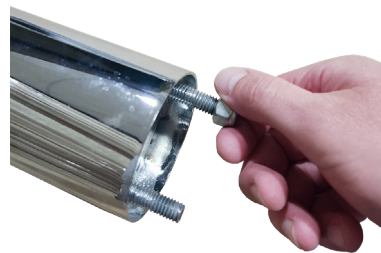
Tape measure

What's in the box:

(8) 3/4" #10 screws



1. Your tube and spider are separate pieces and will need attached.



2. Remove the lock nuts from the side of the tube with two bolts .



3. Place the spider on the tube through the coordinating holes on the spider. Replace the lock nuts onto the bolts.



4. Tighten the lock nuts to secure the spider to the tube.

5. Flip the tube/spider over and remove the bottom short bolt.



6. Center the cross foot onto the tube. Tighten the cross foot to the tube using the short bolt, lock washer and flat washer.



7. Using a socket set, crescent wrench or similar, tighten the foot to the tube



8. Insert the base glides into the bottom of the foot.

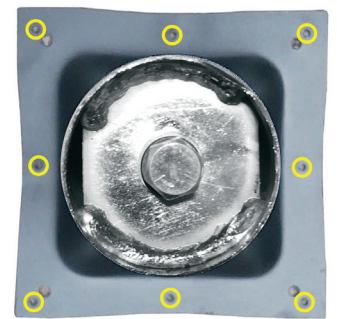
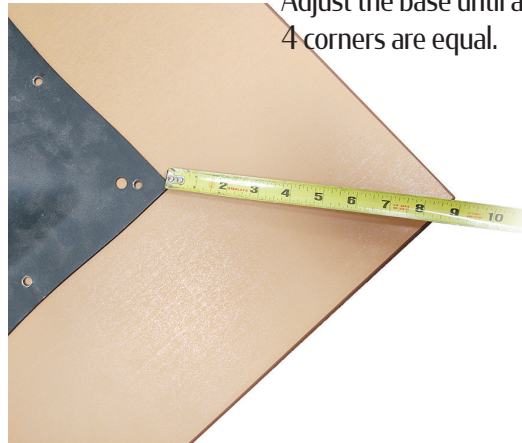
9. Your base is now ready to be attached to the table top.



10. Place the table base onto the bottom side of the table.



11. Measure from each corner of the spider to the corner of the table. Adjust the base until all 4 corners are equal.



12. Use the 8 perimeter holes on the spider (circled in yellow) to fasten the base to the table top.

13. Using the screwdriver or drill driver and (8) 3/4" #10 screws, fasten the base to the table top.



14. Assembly is complete. Enjoy your Oak Street Manufacturing chrome plated stamped steel cross table base!

