

255 Welter Drive  
Monticello, IA 52310



P: 877.465.4344  
F: 877.465.4042  
www.oakstreetmfg.com

## BLACK STAMPED STEEL ADJUSTABLE BASES

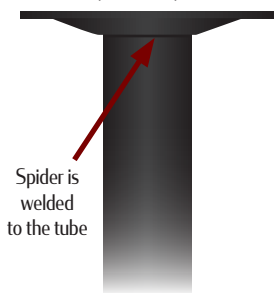


- NEW design for improved performance
  - 1st bolt is screwed into the inner tube's variable height holes
  - 2nd bolt is screwed into the side of the tube to prevent wobbling
- For occasional height adjustments
- 3" stamped steel tube adjusts to variable finished heights (before table top attachment):
  - 28-1/2" - Standard Height
  - 32-1/2" - Healthcare Height
  - 34-1/2" - Counter Height
  - 40-1/2" - Bar Height
- Oak Street Labor Saver tube & spider
- Fits on the following Oak Street cross & disc feet:
  - 22" x 22"
  - 22" x 30"
  - 30" x 30"
  - 5" x 22"
  - 18" Disc
  - 22" Disc
- Adjustable base can accommodate table sizes up to 36" x 36". Larger table tops are not recommended & will void warranty
- Includes non-marring, adjustable black glides
  - Super Leveler self-leveling glides available (& recommended) for an upcharge
- F.O.B. Iowa

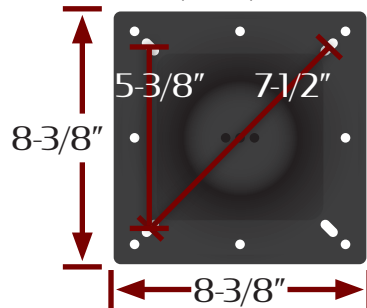
### Height Adjustment Key

- 0 holes visible - Standard height
- 1 hole visible - Healthcare height
- 2 holes visible - Counter height
- 3 holes visible - Bar Height

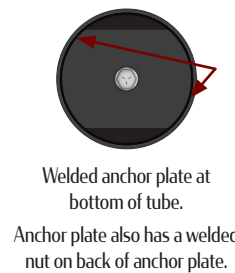
SPIDER / TUBE TOP  
(SIDE)



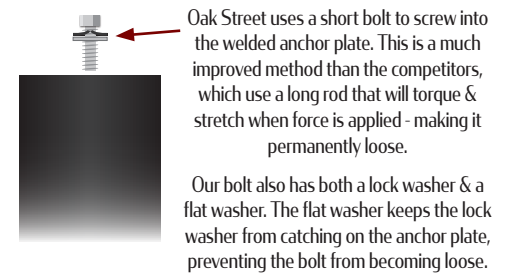
SPIDER  
(TOP)



TUBE BOTTOM  
(BOTTOM)



TUBE BOTTOM  
(SIDE)



**Step 7:** Flip table over & it's ready to use!

**Note:** Sleeve on spider part of base may need rotated if holes are covered.