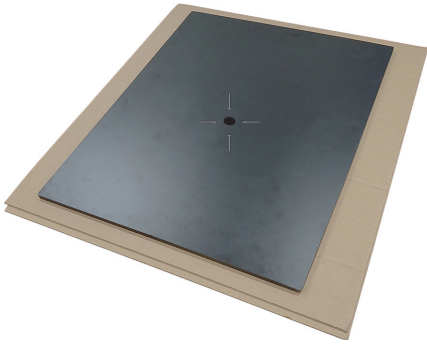


ASSEMBLY INSTRUCTIONS

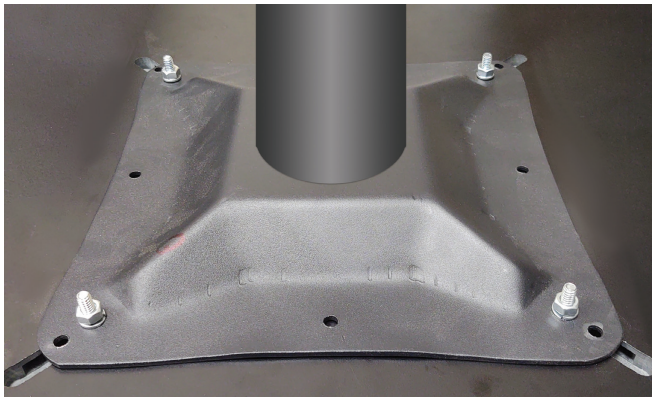
NOTE: All COMPCOR tops are machined to accommodate elevator bolts that are easily adjustable to align with holes in Oak Street spiders.



1. Place table top face-down onto a non-damaging surface such as cardboard.



2. Insert included elevator bolts, thread-side up, into rails.



3. Place table base onto table top so all bolts in table top go through inner corner holes in spider. Put included lock washers & nuts onto bolts then tighten until snug.



4. Screw out short bolt in bottom of tube/spider.

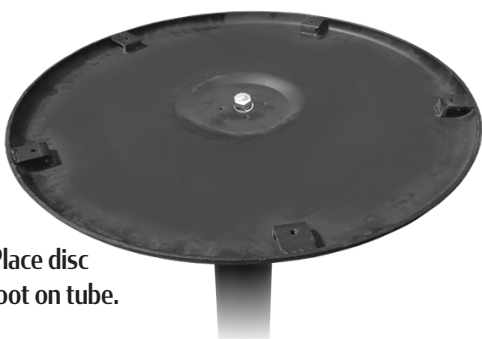


5. Place cross foot on tube.



6. Using socket set or crescent wrench, screw in short bolt with lock washer and flat washer into tube.

7. Locate leveling glides and screw into welded end tabs of foot.



5. Place disc foot on tube.

